

---

# C6 SysEx Tool User's Manual

---

**Copyright 2006-2008  
ELEKTRON MUSIC MACHINES AB**

C6 XP 1.3b and C6 OS X 1.3b

---

## **INTRODUCTION**

C6 is a SysEx tool developed by Elektron Music Machines for use with its product line; the SidStation, the Machinedrum and the Monomachine.

C6 is particularly useful for transferring samples to and from the Machinedrum SPS-1 UW or waveforms to the SFX-60MK2.

Supported formats are MIDI System Exclusive (SysEx) files. Additionally mono or stereo wave and aiff audio files are supported for transfer using the MIDI Sample Dump Standard (SDS) protocol. MIDI SDS is part of the MIDI Sysex standard.

Data received via MIDI can be saved as MIDI SysEx.

Please use your favourite audio editor for preparing the samples prior to transfer as C6 is not an audio editor or player.

Since C6 displays information on the contents of received SysEx dumps for Elektron products C6 is useful for doing SysEx backups.

C6 is most likely suitable for use with other products as well.



---

## SYSTEM REQUIREMENTS

A MIDI interface.

### *C6 XP*

An x86 compatible computer running Windows. The software has been tested on Windows XP but should work on ME/2000/Vista.

### *C6 OS X*

The software has been tested to work on OSX 10.4.11 and 10.5.4. It is a Universal Binary.

---

## SETTING UP THE SOFTWARE

- **Start C6**
- **Click on [Conf] and select the MIDI In port and MIDI Out port from the two lists.**
- **Press [OK]**

---

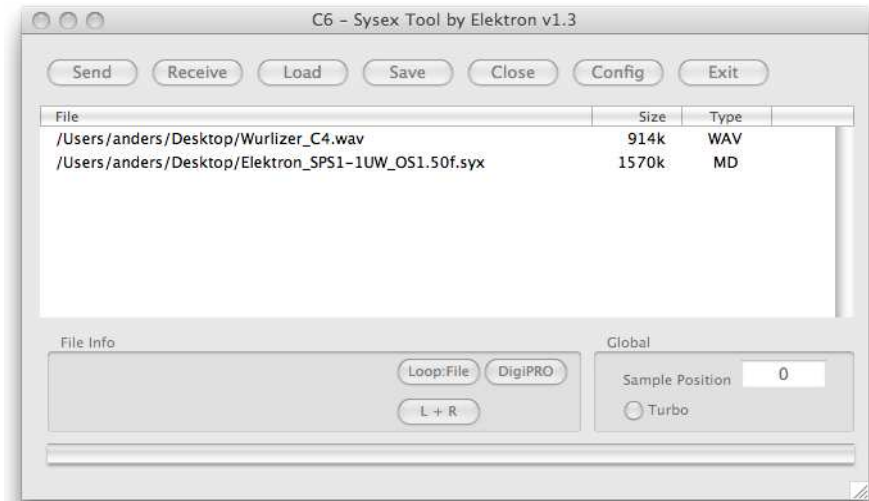
## LICENCE & DISCLAIMER

This software is freeware.

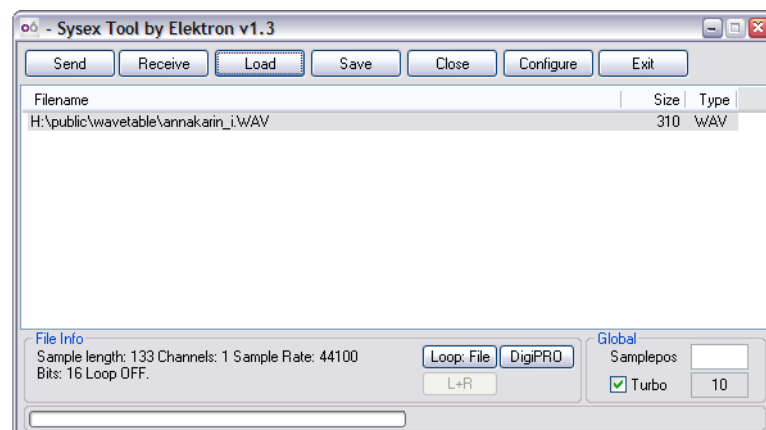
The software is provided “as is”, without warranty of any kind, express or implied, including but not limited to the warranties of merchantability, fitness for a particular purpose and non infringement. In no event shall the authors or copyright holders be liable for any claim, damages or other liability, whether in an action of contract, tort or otherwise, arising from, out of or in connection with the software or the use or other dealings in the software.

## FUNCTIONS OF THE MAIN PROGRAM WINDOW

## OS X



## XP



- **[Send]** Send the current selection of files. During transmission the button changes to [Stop]. [Stop] stops the current transfer. Pressing [Send] with no file selected opens the Load dialog.
- **[Receive]** Receive SysEx to C6. During reception the button changes to [Stop]. When all data is received use [Stop] to finish the current receive. If some data has been successfully received you will see a new entry in the list browser.
- **[Load]** Load files to send from C6.
- **[Save]** Save the current selection of files or received data to disk.
- **[Close]** Remove the current selection of items from the data browser.
- **[Config]** Configure C6 to your own taste.
- **[Exit]** Quit C6.



### **DATA BROWSER**

Lists all loaded files and the received data. Filename, length and type is listed. Select an item to get additional info in the File Info field. The items in the data browser can be rearranged. Drag and drop to the data browser is supported.

### **FILE INFO**

Shows additional info about files and received data. For Elektron SysEx dumps a brief description of the contents is displayed. For audio files the basic parameters are listed.

- **[Loop]** For audio files the looping behaviour is controlled when sending them as a MIDI SDS. Loop:File honours the looping information stored in the file. Loop On forces looping behaviour. Loop Off selects no looping.
- **[Stereo]** Selection for stereo audio files what to send as MIDI SDS, as a MIDI SDS transfer is always mono, or when converting a loop to DigiPRO format. L + R sends a mix of the two channels. Left or Right sends the selected channel only.
- **[DigiPRO]** Converts WAVE or AIFF samples either using the full sample or, if present, the sample loop points to Monomachine DigiPRO waveform format. The maximum allowed length of the loop is 16384 samples.

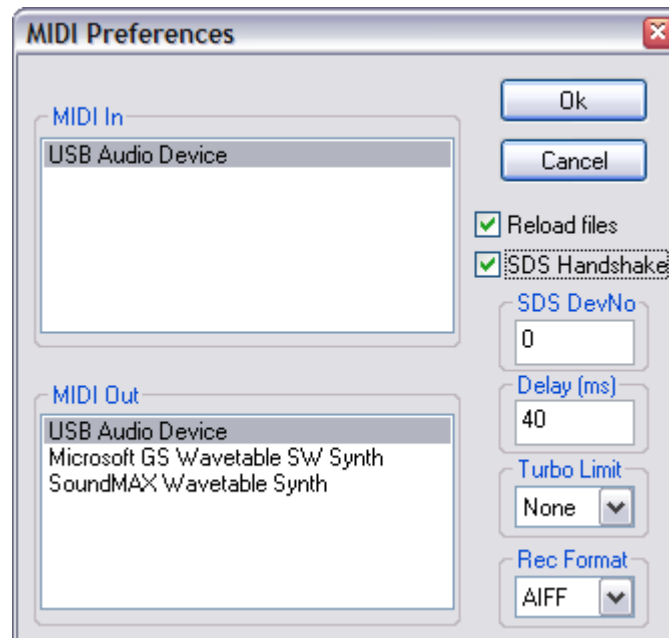
### **GLOBAL**

- **Sample position.** Enter the sample position you want the MIDI SDS file to contain when sending an audio file. Automatically updated for each sent file to allow for easy transfer of multiple files.
- **Turbo button.** Press this button and if the MIDI interface is an Elektron Turbo MIDI interface, connected to a turbo enabled device, a turbo speed connection is established.

### **STATUS ROW**

- **Progress bar.** Shows the progress of each sent file.
- **Sending text.** Displays Sending when sending is in progress.
- **Receiving text.** Displays the number of received data bytes.

## FUNCTIONS OF THE CONFIGURE WINDOW



- **[Ok]** Accept and save changes
- **[Cancel]** Exit window without saving changes.
- **Reload Files.** When this option is chosen C6 will reload the files open in the data browser when the program is started next time.
- **SDS Handshake.** Select whether to use handshaking or not when sending samples.
- **SDS Dev Number.** Select which device number the sample sender will communicate with. The Machinedrum reacts to all device numbers and responds using device number 0.
- **Delay**  
**C6 XP**  
Time in milliseconds between each package when sending MIDI out. Increase this number if you have problems with transfers not making it over to the other side. Typical amounts should be in the 5 to 50 region.  
**C6 OS X**  
Time in ticks between packages when sending an audio file as a MIDI SDS dump. A tick is around 1/60 second. Increase this number if you have problems with transfers not making it over to the other side. Typical amounts would be 1 or 2.
- **Turbo Limit.** This lets you limit the transfer speed selected when you press the turbo button in the main program window. A turbo enabled MIDI interface such as the Elektron Turbo MIDI TM-1 is needed.



- **Rec Format**

When receiving MIDI SDS from an external device the dump is automatically split into one file for each sample. The format of the file is either AIFF, WAV, raw SDS or None selectable in the Rec format list. If None is selected no splitting occurs and all data end up in one big dump.

**MIDI IN**

Lists available MIDI ports ready for selection. Select one.

**MIDI OUT**

Lists available MIDI ports ready for selection. Select one.

---

**THE FILE LIST FILE FORMAT, C6**

This is c6 own file format that saves the list of the files currently loaded as well as their loop and stereo settings. If the c6 file is put in a parent directory of a file in the list, that file path will be stored relative to the directory. This can be useful for example if you want to archive or move a project.

*C6 XP*

The c6 file can be saved either by not selecting any file in the file list or by specifying the c6 extension in the save file selector.

*C6 OS X*

The c6 file is the selected file format when choosing save file and no files in the file list are selected.